

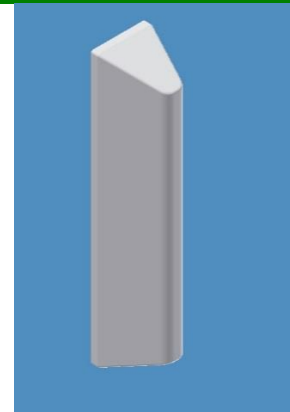
## MA-WD866-BD7

### 865-867 MHz Bidirectional sector Antenna

MARS Bidirectional Antenna is ideal for deployment in tunnels, Highways or long building corridors. It features small and unobtrusive profile that blends easily with any environment.

Applicable Applications:

- Tunnel coverage.
- Indoor cell extender.
- Highways Application



### Specifications

#### *Electrical*

Frequency range	865-867 MHz
Gain	7 dBi
3 dB Beam-Width, Azimuth, typ.	2 x 75°
3 dB Beam-Width, Elevation, typ.	30°
VSWR, max.	1.5 :1
Angle between 2 beams	180°
Polarization	Linear, Horizontal
Input power, max	10 Watt
Input Impedance	50 Ohm

#### *Mechanical*

Dimensions (HxWxD)	615 x 105 x 130 mm (24.2" x 4.13" x 5.12")
Weight	1 kg.
Connector	N-Type Female
Back Plane	Aluminum, Conversion Coated
Radome	ABS, UV Protected
Mount	Pole Mountable

#### *Environmental*

Operating Temperature Range	-30°C to +70°C
Vibration	According to IEC 60721-3-4
Wind Load	200 Km/h (Survival)
Flammability	UL94
Water Proofing	IP-65
Humidity	ETS 300 019-1-4, EN 302 085 (annex A.1.1)
Salt Fog	According to IEC 68-2-11

MARS Antennas & RF Systems proprietary information

MARS reserves the right to make technical changes or modifications to any of its products and specifications without prior notice and without implementing such changes to prior supplied products. Product images are representative and indicative only. Warranty terms and general conditions of sale are applicable on any purchase of any product, available on MARS website.

3 Hamanor st. Holon 5886103, P.O.Box 1852 Holon 5811801, Israel

Tel: +972-3-5599661 • Fax: +972-3-5599677 • e-mail: mars@marsant.co.il • web: www.mars-antennas.com