

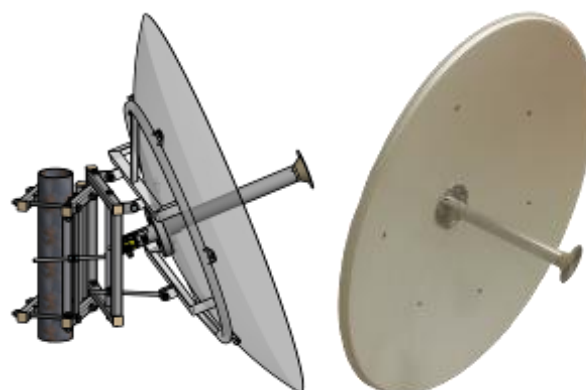
MA-WP61-DP35

5.7-6.5 GHz Dual Polarized Parabolic Dish Antenna, 1.2m (4 ft.)

MARS brand new High Gain, Dual Polarization, Parabolic Dish antenna provides coverage of 5.7 – 6.5 GHz.

Additional features:

- Efficient and stable performance.
- High gain stable performance.
- Suitable for harsh weather.



Specifications

Electrical

Frequency range	5.7-6.5 GHz
GAIN, typ.	35 dBi
VSWR, max.	1.7: 1
Polarization	Dual Pole
	Dual Polarization Vertical & Horizontal
Side Lobe Level, typ.	-17 dB
Cross Polarization, typ.	-25 dB
3 dB Beam-Width, H-Plane, typ.	2.5°
3 dB Beam-Width, E-Plane, typ.	2.5°
Front to Back Ratio	-40 dB
Port to Port Isolation, typ.	-35 dB
Input power, max	100 Watt
Input Impedance	50 Ohm

Mechanical

Dimensions (Ø)	1200 mm. (4 ft.)
Weight	18 kg.
Connector	2 x N-Type, Female
Mount	See Ordering Options

Environmental

Operating Temperature Range	-40°C to +65°C
Vibration	According to IEC 60721-3-4
Wind Load	200 km/h (survival)
Flammability	UL94
Water Proofing	IP-65
Humidity	ETS 300 019-1-4, EN 302 085 (annex A.1.1)
Salt Fog	According to IEC 68-2-11
Ice and Snow	25mm radial (survival)

Ordering Options

MA-WP61-DP35	Antenna Suited for MNT-WP12 mount
MA-WP61-DP35B	Antenna with MNT-WP12 mount

MARS Antennas & RF Systems proprietary information

MARS reserves the right to make technical changes or modifications to any of its products and specifications without prior notice and without implementing such changes to prior supplied products. Product images are representative and indicative only. Warranty terms and general conditions of sale are applicable on any purchase of any product, available on MARS website.

3 Hamanor st. Holon 5886103, P.O.Box 1852 Holon 5811801, Israel

Tel: +972-3-5599661 • Fax: +972-3-5599677 • e-mail: mars@marsant.co.il • web: www.mars-antennas.com