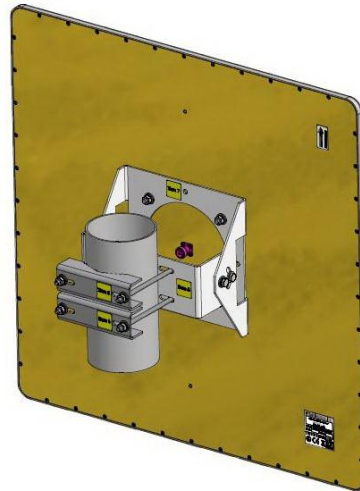


MNT-60A

Mount for CPE / Subscriber Large Size Antennas

MNT-60A Features:

- Elevation Adjustable Mount for Subscriber Large Size Antennas.
- Suitable for pole or wall mounting.
- Allowing angle inclination of 16°.
- Made of Steel SAE1020, Resist to Corrosion.
- Comes with all required hardware in a kit form.
- Heavy duty.



Specifications

Mechanical

Material	STEEL, GALVANIZED
Kit Weight	2 kg.
Load	700 N
Suitable for pole diameter range	1-4" (inch)
Movement Possibility	Elevation $\pm 16^\circ$ (with antenna 600 x 600 mm mounted)

Environmental

Operating Temperature Range	-40°C to +85°C
Vibration	According to IEC 60721-3-4
Flammability	UL94
Ice and Snow	25 mm radial (survival)
Wind Load	210 km/h
Humidity	ETS 300 019-1-4, EN 302 085 (annex A.1.1)

MARS Antennas & RF Systems proprietary information

MARS reserves the right to make technical changes or modifications to any of its products and specifications without prior notice and without implementing such changes to prior supplied products. Product images are representative and indicative only. Warranty terms and general conditions of sale are applicable on any purchase of any product, available on MARS website.

3 Hamanor st. Holon 5886103, P.O.Box 1852 Holon 5811801, Israel

Tel: +972-3-5599661 • Fax: +972-3-5599677 • e-mail: mars@marsant.co.il • web: www.mars-antennas.com