

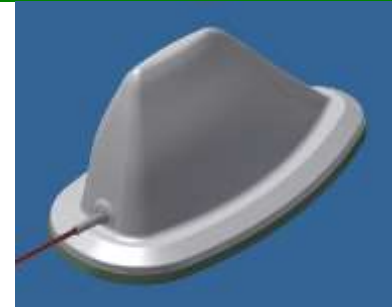
MA-VMB-5RD

698 MHz–6.5 GHz Multi Band Blade Reinforced Antenna for Mobile Applications

MARS Blade Reinforced Antenna is a ruggedized, aerodynamic antenna, for use in mobile applications such as trains, helicopters, buses or cars.

Antenna comes in two versions:

- Fixed Mount (Roof top)
- Magnetic Mount



Specifications

Electrical

Standard	LTE	SMR, AMPS, CDMA, TDMA, GSM 900	PCS, DECT, GSM 1900, UMTS	Bluetooth, ISM, WLAN	WLL	UNII, WLL, H-LAN, Wi-Fi
Frequency range	698-806 (*) MHz	806-960 MHz	1.71-2.17 GHz	2.3-2.7 GHz	3.3-3.8 GHz	4.5-6.5 GHz
GAIN, typ.	2dBi	2dBi	3dBi	4dBi	4dBi	6dBi
VSWR,	typ.< 2.2 : 1 ; max.2.5:1					
Polarization	Linear, Vertical					
Pattern	Omni Directional					
Input power, max	5 Watt					
Input Impedance	50 Ohm					

Mechanical

Dimensions (LxWxH)	169 x 85 x 88 mm (6.65" x 3.34" x 3.46")
Weight	350 gr.
Connector	See Ordering Information
Back Plane	Steel Protected through Zinc Galvanization
Radome	UV Protected Polycarbonate
Mount	See Ordering Information

Environmental

Operating Temp. Range	-40°C to +65°C
Vibration	According to IEC 60721-3-5
Water Proofing	IP-67
Flammability	UL94
Humidity	ETS 300 019-1-4, EN 302 085 (annex A.1.1)

Ordering Options

Model No.	Application / Mount	Connector
MA-VMB-5MRD	Magnetic Mount	95 cm RG316 Pigtail Side with SMA, Male
MA-VMB-5FRD	Fixed Mount (Roof Top)	N-Type, Female

(*) Installation on non-metallic objects requires Ground Plane 350x350 mm min.

MARS Antennas & RF Systems proprietary information

MARS reserves the right to make technical changes or modifications to any of its products and specifications without prior notice and without implementing such changes to prior supplied products. Product images are representative and indicative only. Warranty terms and general conditions of sale are applicable on any purchase of any product, available on MARS website.

3 Hamanor st. Holon 5886103, P.O.Box 1852 Holon 5811801, Israel

Tel: +972-3-5599661 • Fax: +972-3-5599677 • e-mail: mars@marsant.co.il • web: www.mars-antennas.com