



# Parabolic Antennas

Multi Band, Multi Polarized,  
Flat Panel & OMNI  
Any Size, Any Frequency, Any Gain Ratio

MOBILE INDOOR  
LTE MIMO OMNI WI-FI  
WLAN  
OUTDOOR

[www.mars-antennas.com](http://www.mars-antennas.com)

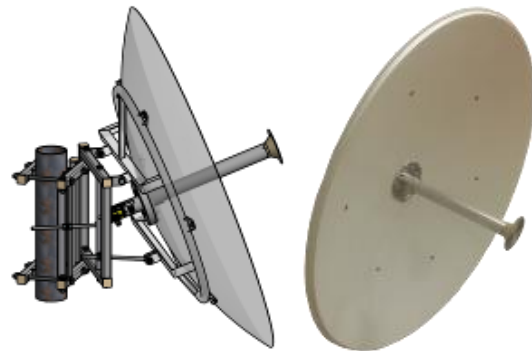
## MA-WP56-DP34

### 4.9-6.1 GHz Dual Polarization Parabolic Dish Antenna, 1.2m (4ft)

MARS brand new High Gain, Dual Polarization, Parabolic Dish antenna provides coverage of 4.9 – 6.1 GHz

Additional features:

- Efficient and stable performance.
- High gain stable performance.
- Suitable for harsh weather.



## Specifications

### Electrical

|                                |  |
|--------------------------------|--|
| Frequency range                | 4.9-6.1 GHz  |
| GAIN, typ.                     | 34 dBi @ 5.15-6.10 GHz<br>32 dBi @ 4.90-5.15 GHz                           |
| VSWR, max.                     | 2.0: 1 @ 4.90-5.15 GHz<br>1.7: 1 @ 5.15-5.90 GHz<br>2.0: 1 @ 5.90-6.10 GHz |
| Polarization                   | Dual Polarized   |
| Side Lobe Level, typ.          | -18 dB   |
| Cross Polarization, typ.       | -20 dB   |
| 3 dB Beam-Width, H-Plane, typ. | 3°   |
| 3 dB Beam-Width, E-Plane, typ. | 3°   |
| Front to Back Ratio            | -40 dB   |
| Port to Port Isolation, typ.   | -36dB @ 4.9-5.6 GHz<br>-20dB @ 5.6-6.1 GHz                                 |
| Input power, max               | 100 Watt   |
| Input Impedance                | 50 Ohm   |

### Mechanical

|                |                      |
|----------------|----------------------|
| Dimensions (Ø) | 1200 mm. (4 ft.)     |
| Weight         | 18 kg.               |
| Connector      | 2 x N-Type, Female   |
| Mount          | See Ordering Options |

### Environmental

|                             |   |
|-----------------------------|---|
| Operating Temperature Range | -40°C to +65°C                            |
| Vibration                   | According to IEC 60721-3-4                |
| Wind Load                   | 200 km/h (survival)                       |
| Flammability                | UL94                                      |
| Water Proofing              | IP-65                                     |
| Humidity                    | ETS 300 019-1-4, EN 302 085 (annex A.1.1) |
| Salt Fog                    | According to IEC 68-2-11                  |
| Ice and Snow                | 25mm radial (survival)                    |

## Ordering Options

|               |                                   |
|---------------|-----------------------------------|
| MA-WP56-DP34  | Antenna Suited for MNT-WP12 mount |
| MA-WP56-DP34B | Antenna with MNT-WP12 mount       |

MARS Antennas & RF Systems proprietary information

MARS reserves the right to make technical changes or modifications to any of its products and specifications without prior notice and without implementing such changes to prior supplied products. Product images are representative and indicative only. Warranty terms and general conditions of sale are applicable on any purchase of any product, available on MARS website.

3 Hamanor st. Holon 5886103, P.O.Box 1852 Holon 5811801, Israel

Tel: +972-3-5599661 • Fax: +972-3-5599677 • e-mail: mars@marsant.co.il • web: www.mars-antennas.com

## MA-WP56-DP32

### 5.1-5.9 GHz Dual Polarization Parabolic Dish Antenna, 0.9m (3ft)

MARS brand new High Gain, Dual Polarization, Parabolic Dish antenna provides coverage of 5.1-5.9 GHz

Additional features:

- Efficient and stable performance.
- High gain stable performance.
- Suitable for harsh weather.



## Specifications

### Electrical

|                                |  |
|--------------------------------|--|
| Frequency range                | 5.1-5.9 GHz                                    |
| Gain, typ.                     | 32 dBi   |
| VSWR, max.                     | 1.7: 1   |
| Polarization                   | Dual Polarized                                 |
| Side Lobe Level, typ.          | -15 dB   |
| Cross Polarization, typ.       | -20 dB   |
| 3 dB Beam-Width, H-Plane, typ. | 4°   |
| 3 dB Beam-Width, E-Plane, typ. | 4°   |
| Front to Back Ratio            | -40 dB   |
| Port to Port Isolation, typ.   | -36dB @ 5.1 – 5.6 GHz<br>-20dB @ 5.6 – 5.8 GHz |
| Input power, max               | 100 Watt                                       |
| Input Impedance                | 50 Ohm   |

### Mechanical

|                |                      |
|----------------|----------------------|
| Dimensions (Ø) | 900 mm. (3 ft.)      |
| Weight         | 18 kg.               |
| Connector      | 2 x N-Type, Female   |
| Mount          | See Ordering Options |

### Environmental

|                             |   |
|-----------------------------|---|
| Operating Temperature Range | -40°C to +65°C                            |
| Vibration                   | According to IEC 60721-3-4                |
| Wind Load                   | 200 km/h (survival)                       |
| Flammability                | UL94                                      |
| Water Proofing              | IP-65                                     |
| Humidity                    | ETS 300 019-1-4, EN 302 085 (annex A.1.1) |
| Salt Fog                    | According to IEC 68-2-11                  |
| Ice and Snow                | 25mm radial (survival)                    |

## Ordering Options

|               |                                   |
|---------------|-----------------------------------|
| MA-WP56-DP32  | Antenna Suited for MNT-WP12 mount |
| MA-WP56-DP32B | Antenna with MNT-WP12 mount       |

MARS Antennas & RF Systems proprietary information

MARS reserves the right to make technical changes or modifications to any of its products and specifications without prior notice and without implementing such changes to prior supplied products. Product images are representative and indicative only. Warranty terms and general conditions of sale are applicable on any purchase of any product, available on MARS website.

3 Hamanor st. Holon 5886103, P.O.Box 1852 Holon 5811801, Israel

Tel: +972-3-5599661 • Fax: +972-3-5599677 • e-mail: [mars@marsant.co.il](mailto:mars@marsant.co.il) • web: [www.mars-antennas.com](http://www.mars-antennas.com)

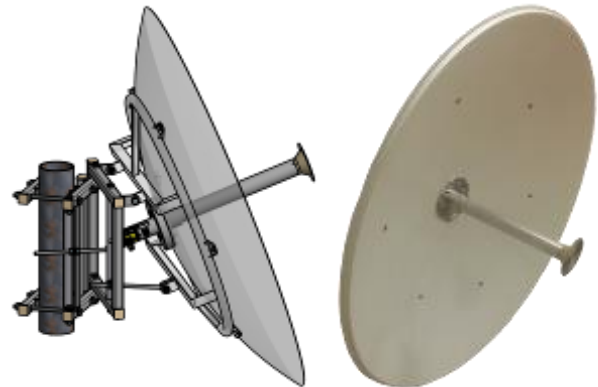
## MA-WP61-DP35

### 5.7-6.5 GHz Dual Polarized Parabolic Dish Antenna, 1.2m (4 ft.)

MARS brand new High Gain, Dual Polarization, Parabolic Dish antenna provides coverage of 5.7 – 6.5 GHz.

Additional features:

- Efficient and stable performance.
- High gain stable performance.
- Suitable for harsh weather.



## Specifications

### Electrical

|                                |   |
|--------------------------------|---|
| Frequency range                | 5.7-6.5 GHz                             |
| GAIN, typ.                     | 35 dBi                                  |
| VSWR, max.                     | 1.7: 1                                  |
| Polarization                   | Dual Pole                               |
| Side Lobe Level, typ.          | Dual Polarization Vertical & Horizontal |
| Cross Polarization, typ.       | -17 dB                                  |
| 3 dB Beam-Width, H-Plane, typ. | -25 dB                                  |
| 3 dB Beam-Width, E-Plane, typ. | 2.5°                                    |
| Front to Back Ratio            | 2.5°                                    |
| Port to Port Isolation, typ.   | -40 dB                                  |
| Input power, max               | -35 dB                                  |
| Input Impedance                | 100 Watt                                |
|                                | 50 Ohm                                  |

### Mechanical

|                |                      |
|----------------|----------------------|
| Dimensions (Ø) | 1200 mm. (4 ft.)     |
| Weight         | 18 kg.               |
| Connector      | 2 x N-Type, Female   |
| Mount          | See Ordering Options |

### Environmental

|                             |   |
|-----------------------------|---|
| Operating Temperature Range | -40°C to +65°C                            |
| Vibration                   | According to IEC 60721-3-4                |
| Wind Load                   | 200 km/h (survival)                       |
| Flammability                | UL94                                      |
| Water Proofing              | IP-65                                     |
| Humidity                    | ETS 300 019-1-4, EN 302 085 (annex A.1.1) |
| Salt Fog                    | According to IEC 68-2-11                  |
| Ice and Snow                | 25mm radial (survival)                    |

## Ordering Options

|               |                                   |
|---------------|-----------------------------------|
| MA-WP61-DP35  | Antenna Suited for MNT-WP12 mount |
| MA-WP61-DP35B | Antenna with MNT-WP12 mount       |

MARS Antennas & RF Systems proprietary information

MARS reserves the right to make technical changes or modifications to any of its products and specifications without prior notice and without implementing such changes to prior supplied products. Product images are representative and indicative only. Warranty terms and general conditions of sale are applicable on any purchase of any product, available on MARS website.

3 Hamanor st. Holon 5886103, P.O.Box 1852 Holon 5811801, Israel

Tel: +972-3-5599661 • Fax: +972-3-5599677 • e-mail: mars@marsant.co.il • web: www.mars-antennas.com

## MA-WP29-38

### 27.5 – 31.3 GHz Parabolic Dish Antenna, 1 ft.

MARS NEW MA-WP29-38 is a millimeter wave, high performance and high efficiency parabolic dish antenna.

The antenna covers frequency band of 27.5-31.3 GHz with WR28 waveguide input standard with UG599/U flange.

The antenna is aesthetic small and has unobtrusive profile that blends easily with any environment.

The antenna is easy-installed and is highly recommended as an outstanding logistic solution for Outdoor installations.



## Specifications

### Electrical

|                                |                       |
|--------------------------------|-----------------------|
| Frequency range                | 27.5 – 31.3 GHz       |
| Gain, typ.                     | 38 dBi                |
| VSWR, max.                     | 1.5 : 1               |
| Polarization                   | Linear                |
| Side Lobe Level                | ETSI EN 301215-2 TS2  |
| Cross Polarization             | ETSI 302 217 Class 3B |
| 3 dB Beam-Width, H-Plane, typ. | 2.2°                  |
| 3 dB Beam-Width, E-Plane, typ. | 2.2°                  |
| Front to Back Ratio, min.      | -60 dB                |
| Input power, max               | 100 Watt              |

### Mechanical

|                |                          |
|----------------|--------------------------|
| Dimensions (Ø) | 300 mm (1 ft.)           |
| Weight         | 3 kg.                    |
| Connector      | WR28 with UG599/U flange |
| Radome         | Plastic UV Protected     |
| Mount          | Included                 |

### Environmental

|                             |   |
|-----------------------------|---|
| Operating Temperature Range | -40°C to +65°C                            |
| Vibration                   | According to IEC 60721-3-4                |
| Wind Load                   | 200 km/h (survival)                       |
| Flammability                | UL94                                      |
| Water Proofing              | IP-65                                     |
| Humidity                    | ETS 300 019-1-4, EN 302 085 (annex A.1.1) |
| Salt Fog                    | According to IEC 68-2-11                  |
| Ice and Snow                | 25mm radial (survival)                    |

MARS Antennas & RF Systems proprietary information

MARS reserves the right to make technical changes or modifications to any of its products and specifications without prior notice and without implementing such changes to prior supplied products. Product images are representative and indicative only. Warranty terms and general conditions of sale are applicable on any purchase of any product, available on MARS website.

3 Hamanor st. Holon 5886103, P.O.Box 1852 Holon 5811801, Israel

Tel: +972-3-5599661 • Fax: +972-3-5599677 • e-mail: mars@marsant.co.il • web: www.mars-antennas.com

## MA-WP600-36

**Preliminary**

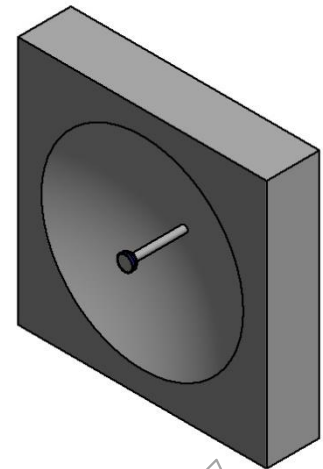
### 57-64 GHz Parabolic Dish Antenna, 13cm Diameter

MARS's brand new **MA-WP600-36** V-Band millimeter wave (mmW) dish antenna covers 57-64 GHz frequencies, with exceptionally efficient performance of 36dBi.

MARS **MA-WP600-36** dish antenna features lightweight of less than 0.35kg and compact size design of 130mm in diameter (0.39ft.), which results in beamwidth of 2.5°.

MARS **MA-WP600-36** low-profile aesthetics design minimizes visual impact in any urban environment or other landscape.

MARS **MA-WP600-36** is pre-assembled.  
Connect the easy-to-use MNT-22 and install.



### Specifications

| <b>Electrical</b>              |   |
|--------------------------------|---|
| Frequency range                | 57 – 64 GHz                               |
| Gain, typ.                     | 36 dBi                                    |
| VSWR, max.                     | 1.5: 1                                    |
| Polarization                   | Single Polarized                          |
| Side Lobe Level, typ.          | Vertical or Horizontal                    |
| Cross Polarization, typ.       | -17 dB                                    |
| 3 dB Beam-Width, H-Plane, typ. | -25 dB                                    |
| 3 dB Beam-Width, E-Plane, typ. | 2.5°                                      |
| Front to Back Ratio, min.      | 2.5°                                      |
| Input power, max               | -40 dB                                    |
| Input Impedance                | 100 Watt                                  |
|                                | 50 Ohm                                    |
| <b>Mechanical</b>              |   |
| Dimensions (Ø)                 | 130 mm. (0.39 ft.)                        |
| Dimensions (L x W x H)         | 160 x160 x 34 mm.                         |
| Weight                         | <0.35 kg.                                 |
| Connector                      | WR-15 Waveguide with UG-385/U-M Flange    |
| Mount                          | See Ordering Options                      |
| <b>Environmental</b>           |   |
| Operating Temperature Range    | -40°C to +65°C                            |
| Vibration                      | According to IEC 60721-3-4                |
| Wind Load                      | 200 km/h (survival)                       |
| Flammability                   | UL94                                      |
| Water Proofing                 | IP-65                                     |
| Humidity                       | ETS 300 019-1-4, EN 302 085 (annex A.1.1) |
| Salt Fog                       | According to IEC 68-2-11                  |
| Ice and Snow                   | 25mm radial (survival)                    |

### Ordering Options

|              |                                 |
|--------------|---------------------------------|
| MA-WP600-36  | Antenna Suited for MNT-22 mount |
| MA-WP600-36B | Antenna with MNT-22 mount       |

Mars Antennas & RF Systems proprietary information

MARS reserves the right to make technical changes or modifications to any of its products and specifications without prior notice and without implementing such changes to prior supplied products. Product images are representative and indicative only. Warranty terms and general conditions of sale are applicable on any purchase of any product, available on MARS website.

3 Hamanor st. Holon 58861, P.O.Box 5 AZOR 58008, Israel

Tel: +972-3-5599661 • Fax: +972-3-5599677 • e-mail: mars@marsant.co.il • web: www.mars-antennas.com





3 Hamanor st. Holon 5886103, Israel

P.O.B 1852 Holon 5811801, Israel

Tel: +972-3-5599661

Fax: +972-3-5599677

E-mail: [mars@marsant.co.il](mailto:mars@marsant.co.il)

[www.mars-antennas.com](http://www.mars-antennas.com)



[www.mars-antennas.com](http://www.mars-antennas.com)