

## MA-WA580- DP10

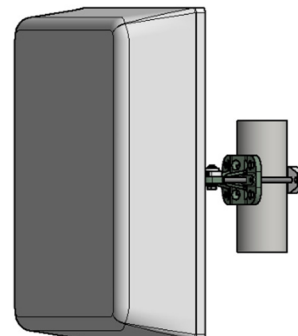
### 410-698 MHz Dual-Pol Panel Antenna Directional Antenna

MARS MA-WA580-DP10 is a Dual Polarization and Dual Slant Directional Antenna covering 410-698 MHz providing a stable and efficient gain performance.

The antenna provides solutions for White Space applications.

*The antenna is aesthetic small and has an unobtrusive profile that blends easily with any environment.*

*The antenna is easy-installed and is highly recommended as unobtrusive logistic solution for Outdoor installations as well as In-Building Installations.*



### Specifications

<b>Electrical</b>	
Frequency range	410-698 MHz
Gain, typ.	9.5 ± 1 dBi
VSWR, max.	1.7 : 1
Polarization	Dual Pol Linear, Vertical and Horizontal
3 dB Beam-Width, E-Plane, typ.	60°
3 dB Beam-Width, H-Plane, typ.	68°
Cross Polarization, typ.	-20 dB
Port to Port Isolation, min.	-20 dB
Input power, max	20 Watt
Lightning Protection	DC Grounded
Input Impedance	50 Ohm
<b>Mechanical</b>	
Dimensions (HxWxD)	500 x 500 x 140 mm (19.7" x 19.7" x 5.5" )
Weight	2.7 Kg.
Connector	2 x N-Type, Female
Back Plane	Aluminum; protected through chemical passivation
Radome	UV Protected Plastic
Mount	MNT-22
<b>Environmental</b>	
Operating Temperature Range	-40°C to +65°C
Vibration	According to IEC 60721-3-4
Wind Load	200 km/h (survival)
Flammability	UL94
Water Proofing	IP-65
Humidity	ETS 300 019-1-4, EN 302 085 (annex A.1.1)
Salt Fog	According to IEC 68-2-11

Mars Antennas & RF Systems proprietary information

MARS reserves the right to make technical changes or modifications to any of its products and specifications without prior notice and without implementing such changes to prior supplied products. Product images are representative and indicative only. Warranty terms and general conditions of sale are applicable on any purchase of any product, available on MARS website.

3 Hamanor st. Holon 58861, P.O.Box 5 AZOR 58008, Israel

Tel: +972-3-5599661 • Fax: +972-3-5599677 • e-mail: mars@marsant.co.il • web: www.mars-antennas.com