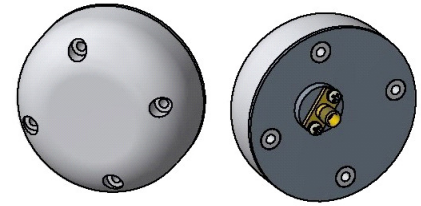


MA-AGP1215-28

Active L1L2 GPS Antenna

MARS Active L1L2 GPS Antenna features stable and efficient performance. Antenna is small and has an aesthetic design. Custom designs are available upon request.



Specifications

Electrical

Frequency range (L1, L2)	1575.4±12 MHz & 1227.6±12 MHz
Gain of Antenna Element at Zenith, typ.	5 dBic @ 1575 MHz; 4 dBic @ 1227 MHz
Polarization	Right Hand Circular
Axial ratio, typ.	3 dB
LNA Gain, typ.	26 dB
Rejection, typ. Frequency 1227.6 ± 50 MHz	40 dB
Rejection, typ. Frequency 1575.4 ± 50 MHz	40 dB
Noise Figure, typ.	3 dB
VSWR, typ	2 : 1
Output Impedance	50 Ohm
Lighting Protection	DC Grounded
Power Supply through RF Connector, typ.	5-28 VDC @ 30 mA (typ.)

Mechanical

Dimensions (ØxH)	70*17 mm
Weight	120 gr.
RF Connector	SMA Female
Mount	4 holes (through)
Radome	UV Plastic Protected

Environmental

Operating Temperature	-40°C to +85°C
Vibration	ETSI EN 300-19-2-4
Flammability	UL-94
Humidity	ETSI EN 300-19-2-4
Water Proofing	IP-67

MARS Antennas & RF Systems proprietary information

MARS reserves the right to make technical changes or modifications to any of its products and specifications without prior notice and without implementing such changes to prior supplied products. Product images are representative and indicative only. Warranty terms and general conditions of sale are applicable on any purchase of any product, available on MARS website.

3 Hamanor st. Holon 5886103, P.O.Box 1852 Holon 5811801, Israel

Tel: +972-3-5599661 • Fax: +972-3-5599677 • e-mail: mars@marsant.co.il • web: www.mars-antennas.com