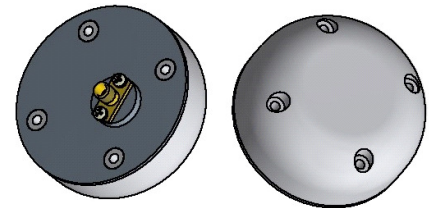


MA-AGPSGL-28

Active L1L2G1G2 Antenna

MARS Active GPS L1L2 and GLONASS G1G2 Antenna features stable and efficient performance. Antenna is small and has an aesthetic design. Custom designs are available upon request.



Specifications

Electrical	
Frequency range	1215-1254 & 1563-1610 MHz
Antenna Element:	
Polarization	Right Hand Circular
Gain, typ.	4 dBic
Beam width (3dB), typ.	100°
Axial ratio, typ.	3 dB
Impedance	50 Ohm
LNA:	
Gain, typ.	28 dB
Noise Figure, typ.	2.5 dB
OP1dB Compression, typ.	15 dBm
OIP3, typ.	20 dBm
Rejection (Frequency < 0.96GHz & >1.8GHz)	> 40 dB
VSWR, typ.	2 : 1
Output Impedance	50 Ohm
Power Supply through RF Cable	5-28 VDC @ 30 mA (typ.)
Lighting Protection	DC grounded
LNA Protection	Limiter, TVS
Mechanical	
Dimensions (ØxH)	60*26 mm
Weight, typ.	120 gr.
Connector	SMA, Female
Base	Aluminum Protected through chemical passivation
Mount	4 holes (through)
Radome	UV Plastic Protected
Environmental	
Operating Temperature	-40°C to +85°C
Vibration	ETSI EN 300-19-2-4
Flammability	UL-94
Humidity	ETSI EN 300-19-2-4
Water Proofing	IP-67

MARS Antennas & RF Systems proprietary information

MARS reserves the right to make technical changes or modifications to any of its products and specifications without prior notice and without implementing such changes to prior supplied products. Product images are representative and indicative only. Warranty terms and general conditions of sale are applicable on any purchase of any product, available on MARS website.

3 Hamanor st. Holon 5886103, P.O.Box 1852 Holon 5811801, Israel

Tel: +972-3-5599661 • Fax: +972-3-5599677 • e-mail: mars@marsant.co.il • web: www.mars-antennas.com